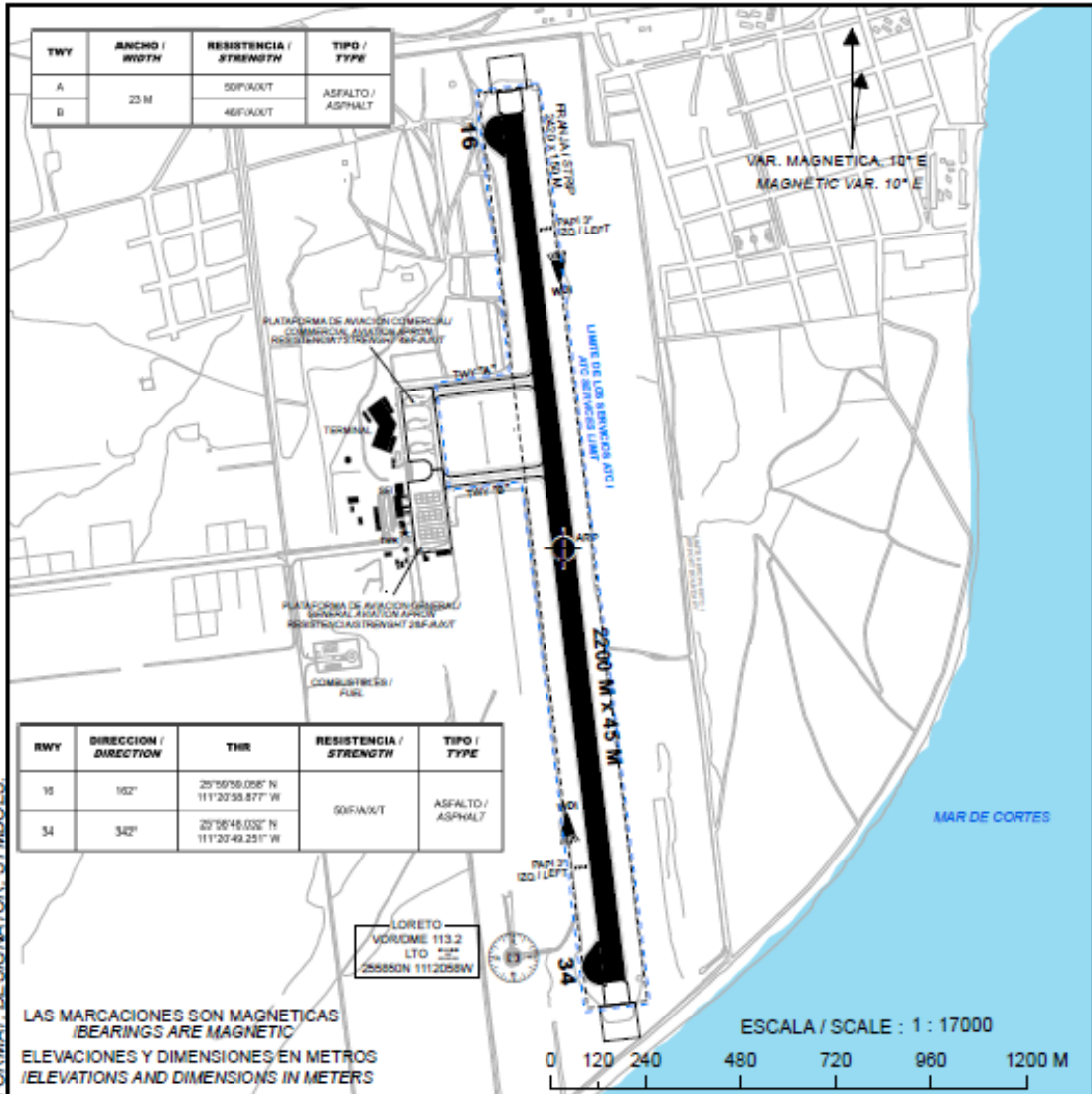


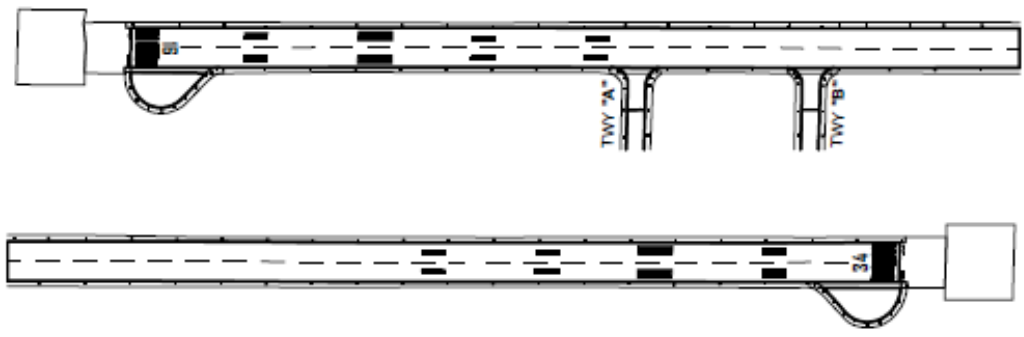
PLANO DE AERODROMO
AERODROME CHART
25 59 23.53 N 111 20 54.06 W
ELEV AD 11 M

TWR 118.4
VOR/DME 113.2
AFTN - MMLT

LORETO
AEROPUERTO INTL /
INTL AIRPORT



SEÑALES Y AYUDAS LUMINOSAS RWY 16/34 Y CALLES DE RODAJE DE SALIDA.
MARKING AND LIGHTING AIDS RWY 16/34 AND EXIT TAXIWAYS



ESCALA / SCALE : 1 : 9000

0 55 110 220 330 440 550 M

CAMBIOS / CHANGES : FORMATO : DESIGNADOR : SIMBOLOGIA / FORMAT : DESIGNATOR : SYMBOLS.

**MINIMOS METEOROLOGICOS / METEOROLOGICAL MINIMUMS
TECHO EN FT Y VISIBILIDAD EN SM / CEILING IN FT AND VISIBILITY IN SM**

EQUIPO / AIRCRAFT	DESPEGUE / TAKE OFF			ALTERNO MINIMOS / ALTERNATE MINIMUMS	
	DIA / DAY	NOCHE / NIGHT		DIA / DAY	NOCHE / NIGHT
	RWY 16/34	RWY 16	RWY 34		
1 Y 2 MOTORES / 1 AND 2 ENGINES	500 – 1 (1600 M)	500 – 1 (1600 M)	700 – 1 (1600 M)	800 – 2 ½ (4000 M)	-----
3 O MAS MOTORES / 3 OR MORE ENGINES					

NOTAS / REMARKS:

UTILIZACION RESTRINGIDA A 5 NM, NO LIBRE
OBSTRUCCIONES MAS ALLA DE ESA DISTANCIA

*USE RESTRICTED TO 5 NM DUE TO
OBSTRUCTION BEYOND 5 NM.*

RWY34 TRANSITO A LA DERECHA

RWY34 TRANSIT TO RIGHT

SALIDA RESTRINGIDA DE PLATAFORMA DE
AVIACION COMERCIAL POR PROPIO IMPULSO

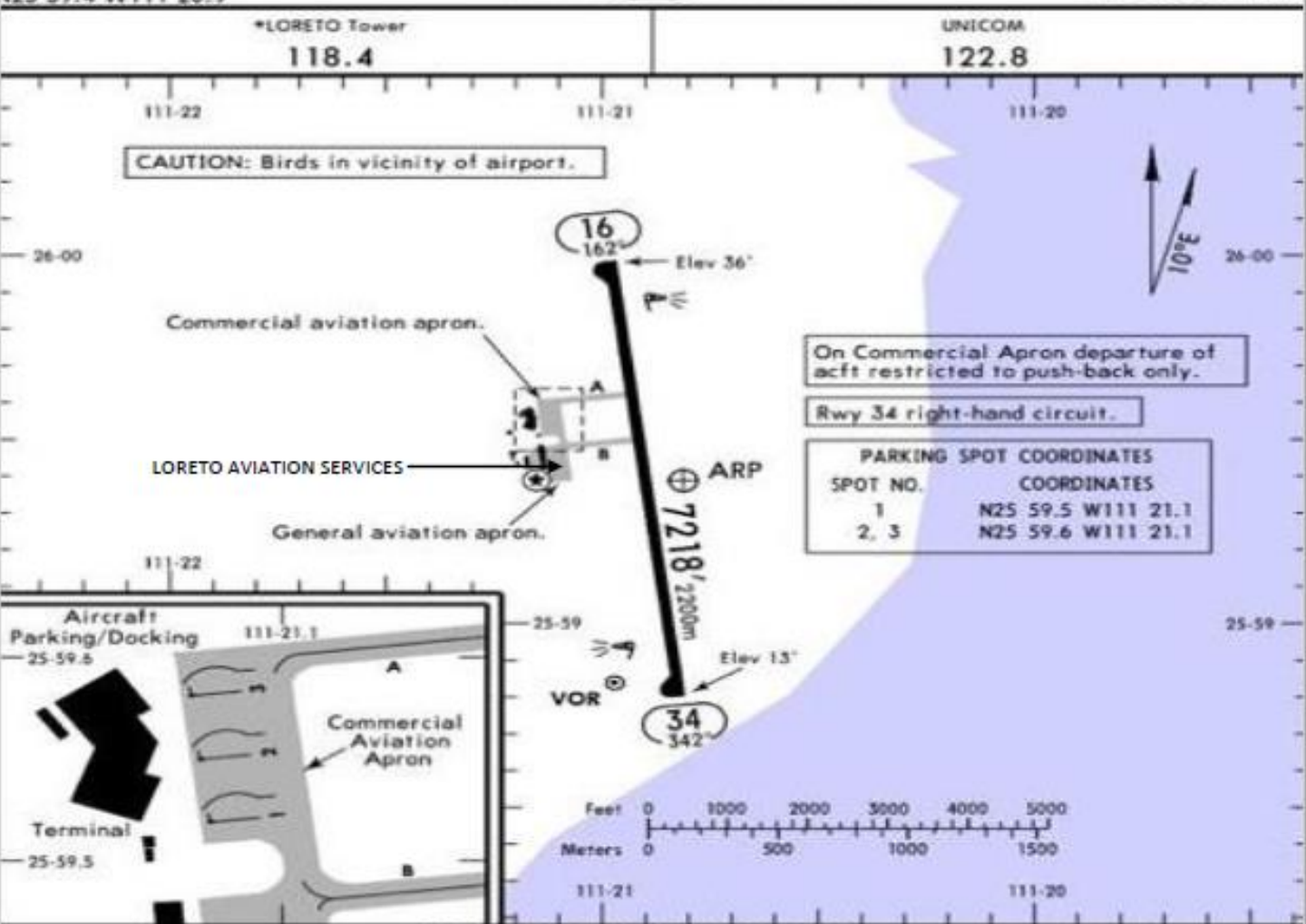
*RESTRICTED EXIT OF COMMERCIAL AVIATION
APRON BY OWN IMPULSE*

TRABAJOS DE DESYERBE (EVENTUALES) EN
FRANJAS DE SEGURIDAD DEL AREA DE
MOVIMIENTO

*EVENTUAL WEEDING AT SAFETY STRIPS OF THE
MOVEMENT AREA*

PRECAUCION: CRUCE DE AVES POR LAS
TRAYECTORIAS DE LAS PISTAS

*CAUTION: FLOCK OF BIRDS CROSSING THE
RUNWAYS TRACKS*



ADDITIONAL RUNWAY INFORMATION

RWY	HIRL	REIL	PAPI-L (angle 3.0°)	USABLE LENGTHS		TAKE-OFF	WIDTH
				LANDING BEYOND Threshold	Glide Slope		
16							148'
34							45m

① Use restricted to 5 NM due to obstruction beyond 5 NM.

	TAKE-OFF		FOR FILING AS ALTERNATE		
	Rwy 16	Rwy 34		DAY	NIGHT
		DAY	NIGHT		
1 & 2 Eng	500-1	500-1	700-1	A	NA
3 & 4 Eng				B	
	C	800-2½			
	D				

*LORETO Tower 118.4

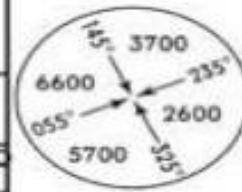
VOR
LTO
113.2

Final
Apch Crs
328°

Minimum Alt
D7.0
2500' (2464')

MDA(H)
720' (707')

Apt Elev 36'
Rwy 13'

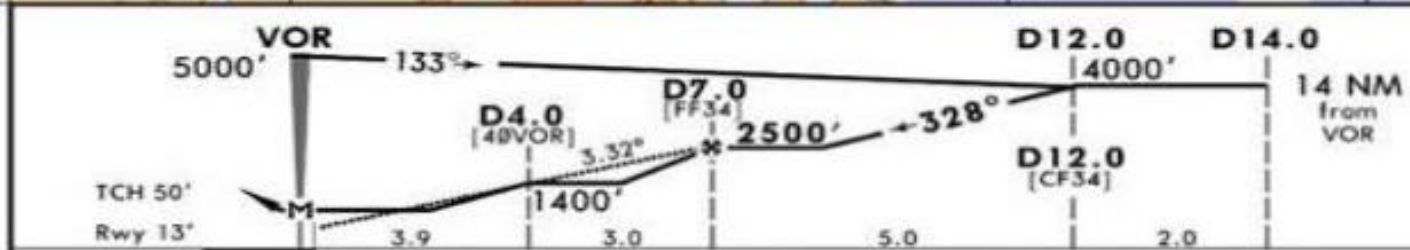
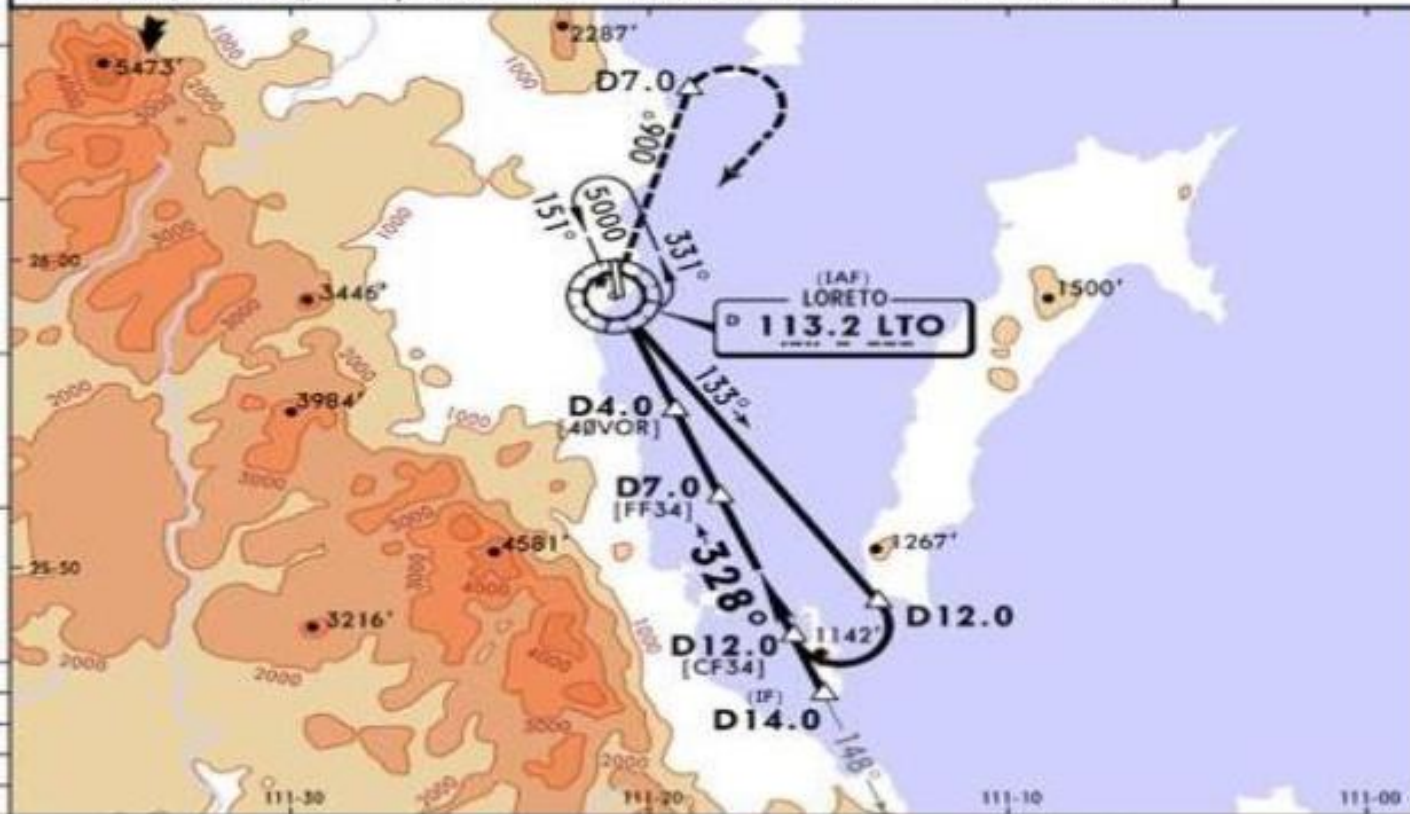


MSA LTO VOR

MISSED APCH: Climbing RIGHT turn to intercept and climb
outbound on LTO VOR R-006 to D7.0, make a RIGHT
within 10 NM to the
minimum holding
altitude.

MISSED APCH: Max Distance Outbound Track D7.0 LTO							
Grnd speed-Kts	80	100	120	140	160	180	200
Time	5:15	4:12	3:30	3:00	2:37	2:20	2:06

Alt Set: IN (MB on req) Apt Elev: 1 hPa Trans Level: FL 195 Trans Alt: 18500'



Grnd speed-Kts	70	90	100	120	140	160	
Descent Angle	3.32°	411	529	587	705	822	940
MAP at VOR							

REIL PAPI-L
LTO
R-006
D7.0

STRAIGHT-IN LANDING RWY 34

MDA(H) **720'** (707')

CIRCLE-TO-LAND

Not Authorized West of Rwy 16-34

A	1	Max Kts	MDA(H)
			90
B	2	120	780' (744') -1 1/4
C	2 1/4	140	780' (744') -2 1/4
D	2 1/2	165	780' (744') -2 1/2

*LORETO Tower 118.4

VOR LTO 113.2	Final Apch Crs 315°	No FAF	MDA(H) Refer to Minimums	Apt Elev 36' Rwy 36'
-------------------------	-------------------------------	--------	--------------------------------	-------------------------

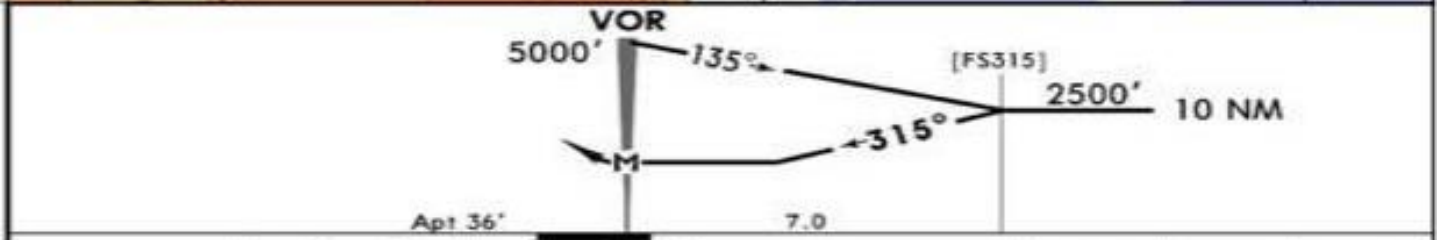
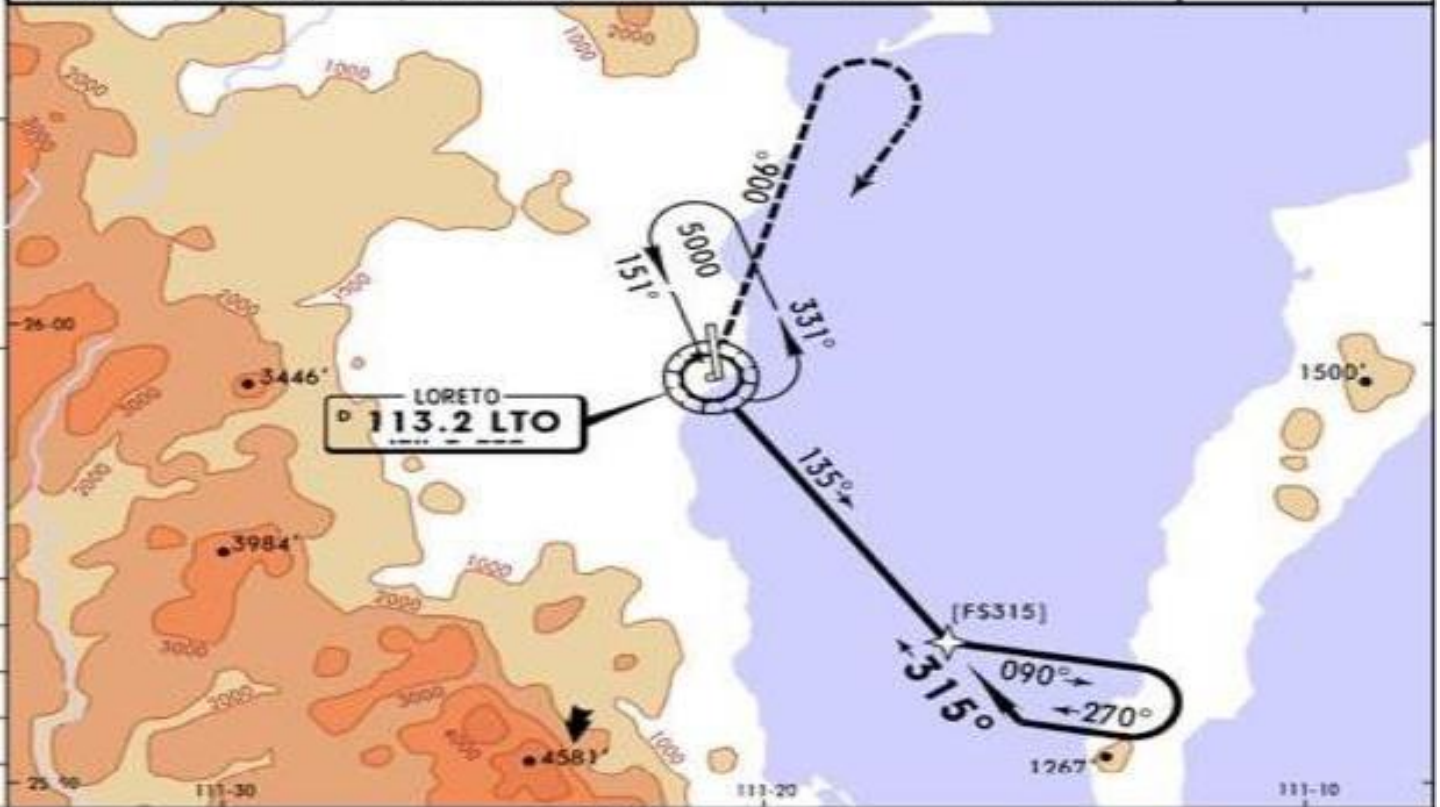


MSA LTO VOR

MISSED APCH: Climbing RIGHT turn to intercept and climb outbound on LTO VOR R-006, then turn RIGHT within 10 NM to the minimum holding altitude.

MAX TIME TO TURN							
Gnd Speed-Kts	80	100	120	140	160	180	200
7 NM to turn	5:15	4:12	3:30	3:00	2:37	2:20	2:06

Alt Set: IN (MB on req) Apt Elev: 1 hPa Trans Level: FL 195 Trans alt: 18500'



MAP at VOR	Lighting - Refer to Airport Chart	RT on 113.2 R-006
------------	-----------------------------------	------------------------------------

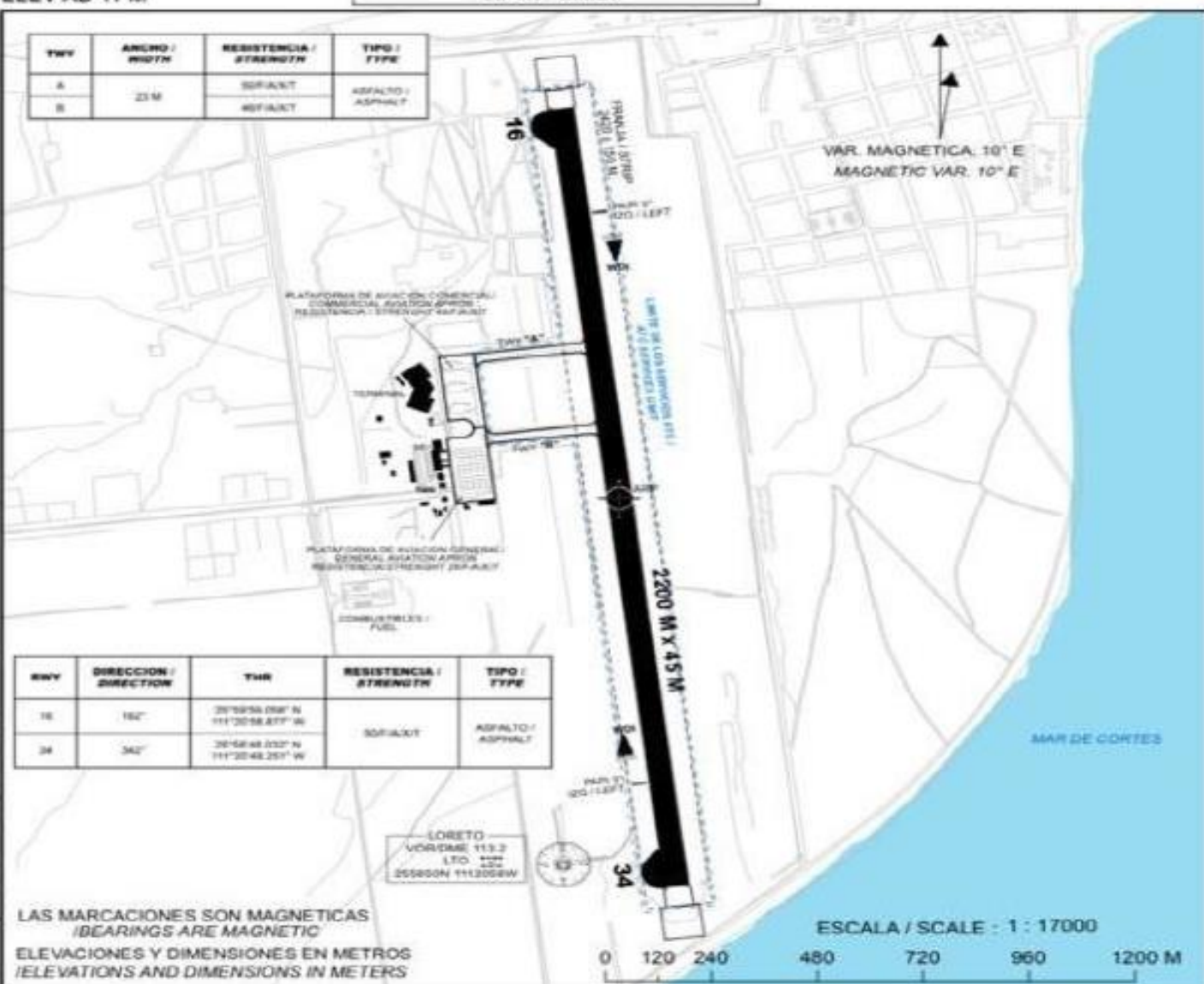
CIRCLE-TO-LAND
Not Authorized West of Rwy 16-34

	Max Kts	MDA(H)
A	90	780' (744') - 1
B	120	780' (744') - 1 1/4
C	140	780' (744') - 2 1/4
D	165	780' (744') - 2 1/2

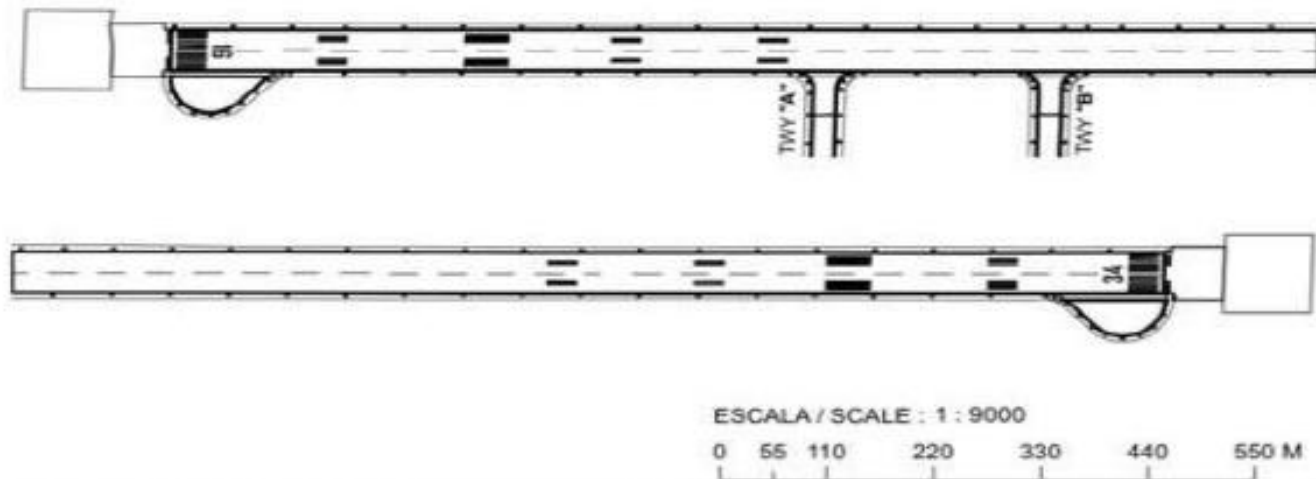
PLANO DE AERODROMO
 AERODROME CHART
 25 59 23.53 N 111 20 54.06 W
 ELEV AD 11 M

TWR 118.4
 VOR/DME 113.2
 AFTN - MMLT

LORETO
 AEROPUERTO INTL /
 INTL AIRPORT



SEÑALES Y AYUDAS LUMINOSAS RWY 16/34 Y CALLES DE RODAJE DE SALIDA.
 MARKING AND LIGHTING AIDS RWY 16/34 AND EXIT TAXIWAYS



CAMBIOS / CHANGES: FORMATO: SIMBOLOGIA / FORMAT: DESIGNATOR: SYMBOLS